

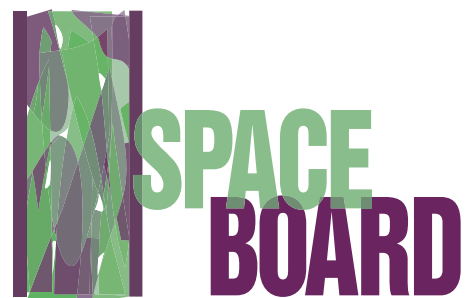


Spaceboard solid core doors.

## What others have to say . . .

Michael Hunt, Business Manager, New Zealand Fire Doors.

"Spaceboard fits a specific need for a lighter type door without compromising performance. It is easy to work with and extremely versatile, enabling us to use it as a base for adding architectural features or as a cost effective solution on its own".





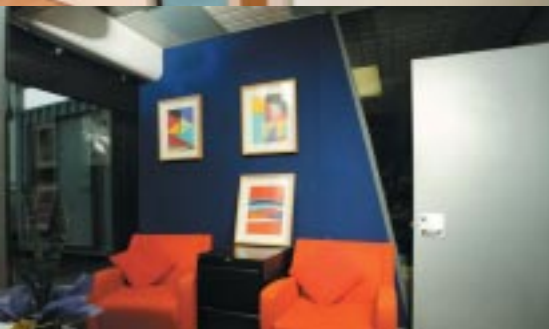
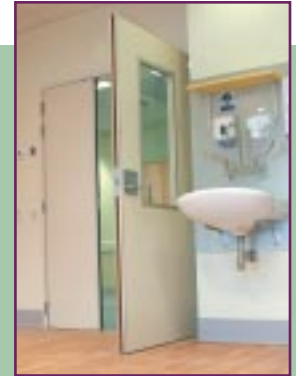
## The best of both worlds . . . lightweight yet strong and durable

Spaceboard™ features a medium density surface with a low density core. The result is a lightweight board that's easy to handle, strong, durable and impact resistant. Spaceboard is the lower density clone of Triboard, distinguishable by the green dye in the strand core. Spaceboard can be used for the manufacture of performance doors in commercial, industrial and domestic applications. It can be used as a non-load bearing demountable partition or as a lightweight solid door. The possibilities are endless.



## Performance panelling

The smooth, medium density fibreboard surface of Spaceboard provides the ideal base for a high grade paint finish, similar to Triboard. The result is a superior finish to enhance any room's décor. Spaceboard's lightweight yet stable inner core offers enhanced screw holding ability. Screws will not loosen over time, ensuring a lasting permanence to your decorative finish.



## Economical solutions

Spaceboard is available in a range of thicknesses to suit your needs. It can be supplied as ready-cut door blanks or as Masterboard for partitions. The ready cut door blanks save you both time and material costs, and effectively speed up the manufacturing process, making your projects more economical and cost effective.



## Technical Information

### Sheet Sizes:

Length (mm)	Width (mm)	Thickness (mm)	Nominal Density kg/m <sup>3</sup>
4120	2505	36	515
4120	2505	38	515
4120	2505	40	515
4120	2505	41.5	515
4120	2505	45	515

■ Other thicknesses and sheet sizes are available, please contact Juken Nissho Ltd (JNL) for details.

Juken Nissho Ltd manufactures product to the most stringent standards with ISO 9001 and 14001 certification. Spaceboard's superior strength and stability is assured with strict quality control throughout its manufacturing processes.

## Spaceboard Handling and Storage

- Prior to cutting, Spaceboard should be conditioned to ensure that the sheets reach their moisture equilibrium before use. This can be done by putting the sheets into fillet to allow air circulation around both sides of the sheets for a minimum of 24 hours.
- Avoid damage to Spaceboard face and edges, keep the panels clean to avoid stains.
- Always stack Spaceboard horizontally, supported by a minimum of three gluts at 1200mm maximum centers, laid on a flat, level and dry surface.
- Spaceboard must be protected from direct sunlight whilst in storage or manufacturing process.
- For short-term storage on site, protect Spaceboard from direct weather exposure with tarpaulins or similar.
- To prevent moisture build up under covers ensure there is proper air circulation around the pack.
- Prior to painting or priming Spaceboard panels, all dust should be removed from the surface of the board.
- Surface sanding is recommended, if a fine surface finish is required.

## Spaceboard Safe Work Practices

Health and safety precautions must be taken when working with heavy and large products such as Spaceboard. Appropriate manual lifting and handling techniques must be developed in accordance with guidelines from OSH (New Zealand) and NOHSC (Australia) and Workplace Australia. Refer to the Material Safety Data Sheet and other publications available either by contacting JNL or from our website [www.jnl.co.nz](http://www.jnl.co.nz).



JNL products include Strandboard and Triboard



Contact details:

### Further enquiries to:

Phone: 0800 JNL Sales (0800 565 725) \*for toll free calls within New Zealand only  
or + 64 9 408 9116 Fax: + 64 9 408 9113  
Postal: PO Box 1450, Auckland, New Zealand  
Email: [sales@jnl.co.nz](mailto:sales@jnl.co.nz)  
[www.jnl.co.nz](http://www.jnl.co.nz)  
[www.triboard.com](http://www.triboard.com)

